

Tips and information for your stay in Kiel

KIEL TO GO



bdr@ps

Kiel.
Kiel

www.kiel-sailing-city.de/en

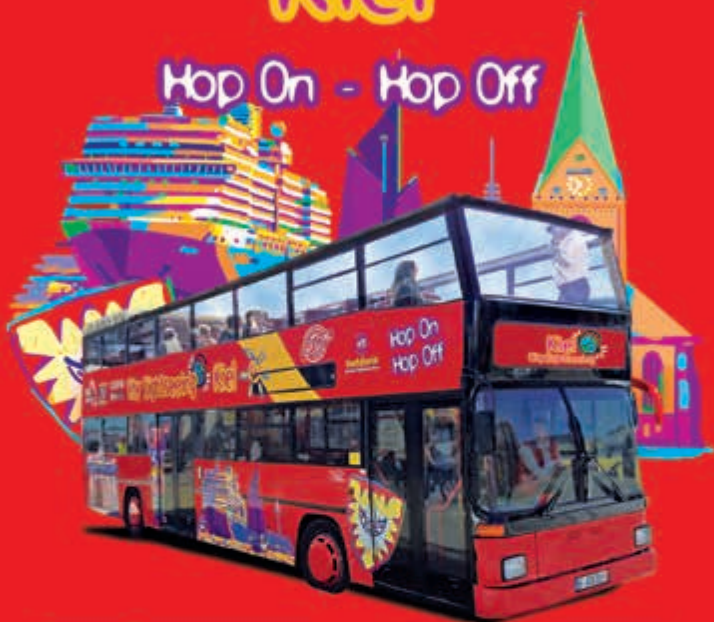
Sailing.City.



2024

City Sightseeing Kiel

Hop On - Hop Off



8

Bushaltestellen
Bus Stops

8

Sprachen
Languages



- Schwedenkai
- Ostseekai
- Nord-Ostsee-Kanal
- Hauptbahnhof



www.citysightseeing-kiel.de

Worldwide
City Sightseeing

Kiel.
Kiel
Sailing. City.

Get your Ticket
for concerts, sport
events, exhibitions
and many more at
Welcome Center
Kieler Förde.

Ticket presale by
eventim



TICKETS · SIGHTSEEING · SOUVENIRS · EVENTS
WELCOME CENTER KIELER FÖRDE AND WELCOME CAFÉ



Tel. +49 (0) 431- 679100 | www.kiel-sailing-city.de/en

Welcome to Kiel!

In our modern Welcome Center Kieler Förde we offer you information about tourist attractions, excursion details and everything you need to know for a great stay in Kiel. In addition to tickets and city maps, you can get many regional products and maritime souvenirs to take home. Go on a virtual flight across the fjord and the city of Kiel at our large-scale display. Enjoy refreshing cold and warm drinks as well as delicious snacks at our Welcome Café.

Welcome Center Kieler Förde · Stresemannplatz 1–3 · 24103 Kiel
Mon–Fri 9.30am–6pm, Sat 10am–4pm · Tel.: +49 (0)431-67 91 00
www.kiel-sailing-city.de · www.kiel-souvenirs.de



APPROX. 5 MIN. FROM MAIN STATION

SOUVENIRS FROM THE REGION

Kiel Kaffee
250g, ground

6⁹⁰ €



Spitzmund Klößenköm
Eierlikör 500 ml, 20 % vol.

19⁹⁹ €

Spitzmund Gin
50 ml, 47 % vol.

8⁵⁰ €



TOP-Tip!

Sophienhof

Sophienhof is filled with beautiful things and things to make you beautiful: Dive into a world of fashion, pleasure and experience over two storeys.

Sophienblatt 20 · 24103 Kiel · Mon–Sat 10 am–8 pm · www.sophienhof.de



APPROX. 5 MIN. FROM WELCOME CENTER

1

Harbour tour

Find out about Kiel's harbour and take a round trip on the fjord. It's worth disembarking in Laboe and visiting the memorial and the U995 submarine.

1 May–30 Sept.: daily from
Bahnhofsbrücke 11 am / 1 pm / 3 pm · at
least 2 hours · German · € 18 pp (adults), € 9 per child (6–14 years) · tickets: directly
on board or at the Welcome Center · www.kiel-sailing-city.de/en



APPROX. 5 MIN. FROM WELCOME CENTER

2



TOP-Tip!

Fuego del Sur

We invite you to take a culinary journey through Argentina and enjoy the delicious flavours and high-quality ingredients of our dishes. Let yourself be enchanted by our hospitality and the cosy atmosphere.

An der Halle 400 1 · 24143 Kiel · www.fuegodelsur.com
Tue–Fri 12 am–10 pm, Sat 5 pm–10 pm, Sun 11 am–10 pm



APPROX. 15 MIN. FROM WELCOME CENTER

3



Holstenstraße

Amble along Holstenstraße, one of the oldest pedestrian areas in Germany that is steeped in tradition and let yourself be inspired by the wide range of goods available.

Mon–Fri 10 am–7 pm, Sat 10 am–6 pm



APPROX. 2 MIN. FROM WELCOME CENTER

4



TOP-Tip!

Sakura Kiel

With its traditional Japanese furnishings and a varied selection of freshly prepared sushi specialities, Sakura is a popular meeting place for sushi lovers and gourmets.

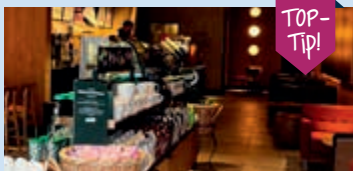
The Sakura's chefs attach great importance to high-quality ingredients and always present their skilful creations with with attention to detail.

Schevenbrücke 7, 24103 Kiel · www.sakura-kiel.com · Mon–Sun 12 am–10 pm



APPROX. 5 MIN. FROM WELCOME CENTER

5



TOP-Tip!

Starbucks Coffee

Your favourite coffee awaits you – either as a quick-to-go option or to relax before your journey.

Holstenstraße 80–82 · 24103 Kiel
Mon–Fri 8 am–7.30 pm,
Sat 8.30 am–7.30 pm
Sun 10 am–6 pm
www.starbucks.de



**APPROX. 5 MIN.
FROM WELCOME
CENTER**

6



Holstenfleet und Bootshafen (marina)

Relax with a view over the water. In the summer the marina is the ideal venue for popular events in Kiel such as “cheese meets wine” or the “marina summer”.

www.kiel-sailing-city.de/en



**APPROX. 10 MIN.
FROM WELCOME
CENTER**

7



Ferdinand Meislahn

Established as a family-run fashion and lingerie store since 1882, Meislahn offers an unique shopping experience with expert advice and a range of the highest sustainable quality. By browsing through the store, you find an exclusive selection of the latest fashion, the finest lingerie and high-quality home textiles and accessories.

Holstenstraße 38–40 · 24103 Kiel · www.meislahn.de
Mon–Fri 10am–6pm, Sat 10am–4pm



TOP-Tip!



APPROX. 10 MIN. FROM WELCOME CENTER

8



TOP-Tip!

Jan & Hein & Klaas & Pit

Welcome to Kiel's largest craft beer restaurant. Guests can look forward to a new large themed catering with an unrivalled range of beers. Taste the modern art of brewing at Kiel's biggest beer dispenser with over 20 beer taps. In addition, the kitchen surprises with refined delicious dishes of superior quality.

Holstenbrücke 1, 24103 Kiel · www.jhkp.de
Sun–Wed 11am–11pm, Thu 11am–midnight, Fri + Sat 11am–1am



APPROX. 10 MIN. FROM WELCOME CENTER

9



Kieler Altstadt (old town)

The heart of Kiel beats in the old town. The variety of the large number of specialist shops combined with the cafés and restaurants create a special form of flair.

www.altstadt-kiel.de



APPROX. 10 MIN. FROM WELCOME CENTER

10



St. Nikolai Church

The St. Nikolai Church is located at "Alter Markt" (old market) and is the oldest and most historic church in Kiel. It was dedicated to Andreas and Nikolas, the patron saints of fishermen and sailors, and was built at the same time as the city of Kiel around 1242. It is worth visiting the open services and concerts.

www.st-nikolai-kiel.de



**APPROX. 10 MIN.
FROM WELCOME
CENTER**

11



Pop-up Pavillon Kiel

At the heart of Kiel's old town, Old Market Square, the "Pop-up Pavillon" offers a varied programme. The worlds of experience invite you to marvel, engage and think.

Alter Markt 17 · 24103 Kiel
kieler-innenstadt.de/pop-up-pavillon
Mon – Sat 11 am – 6 pm



**APPROX. 10 MIN.
FROM WELCOME
CENTER**

12

Kieler Kloster (monastery)

Count Adolf IV. von Schauenburg founded the city of Kiel in 1233 and endowed a Franciscan monastery. In 1999 a carillon was installed in the monastery's belfry, which can be heard several times a day.

Falckstraße 9 · 24103 Kiel · www.kielerkloster.de



APPROX. 15 MIN. FROM WELCOME CENTER

13



Atelier Zippel

Atelier Zippel has large selection of Kiel specific articles and souvenirs. For friends of maritime decor, there are solid brass articles, ships in bottles, bells, lighthouses, key rings, ship models and knot boards to choose from.

Engerstedtstraße 88 · 24103 Kiel · www.atelier-zippel.de
Mon – Fri 9.30 am – 7 pm, Sat 9.30 am – 6 pm



APPROX. 10 MIN. FROM WELCOME CENTER

14



TOP-TIP!



Kiellinie

On a walk along Kiel's most popular promenade you can enjoy the unbeatable view onto the eastern shore of the fjord, the ferries and sailing ships passing by and the imposing shipyard cranes.



APPROX. 20 MIN. FROM WELCOME CENTER

15



TOP-Tip!

AQUARIUM GEOMAR & seal pool

Discover in various show tanks mainly animals from the North Sea and Baltic Sea. Some of the tanks give an impression of the fauna of the Mediterranean and the variety of shapes and colours of the inhabitants of tropical seas. At the aquarium you can observe the manoeuvrable swimming behaviour of the seals. Access to this and the seal feedings are free of charge.

Düsternbrooker Weg 20 · 24105 Kiel · daily 9 am – 6 pm · public feeding daily 10 am + 2.30 pm, except Fridays · www.aquarium-geomar.de



APPROX. 25 MIN. FROM WELCOME CENTER

16



Sailing camp powered by Stadtwerke Kiel

By far the best way to experience Kiel is from the water! Seven days a week, young and old can sample the sailing air and try out the various sailing offers, e.g. guided sailing city tours.

Kiellinie · 24103 Kiel · 07 May – 15 Sept., daily from 10 am · www.segelcamp-kiel.de



APPROX. 30 MIN. FROM WELCOME CENTER

17



SANDHAFEN beachbar

Welcome to Germany's only completely floating beach bar. Directly on the water with your feet in the sand, you enjoy delicious drinks, aromatic organic coffee from a Kiel roastery or fresh harbour breads while listening to relaxed music. Sip on your drink while soaking up the best view of the Kiel skyline and Kiellinie.

**TOP-Tip!**

Blücherbrücke · 24105 Kiel · in spring & summer daily from noon to midnight, current opening hours on Instagram @sandhafen or www.sandhafen.de

**APPOX. 35 MIN. FROM WELCOME CENTER****18****TOP-Tip!**

Jan & Hein & Klaas & Pit – Café & Seafood

The new meeting place with a great view of the Kiel Fjord. The ambience is modern, chic, stylish and cosy. The food is modern, delicious, refined and varied. The menu ranges from seafood, fish and meat to vegetarian and vegan dishes.

Kiellinie 63 · 24105 Kiel · www.jhkp.de

Mon–Thu 11am – 11 pm, Fri 11 am – 12 pm, Sat–Sun 10 am – 1 am

**APPROX. 35 MIN. FROM WELCOME CENTER****19**

Gorch-Fock-Mole

The naval base Kiel-Wik is the home harbour and berth of the training sailing ship Gorch Fock. When the ship is moored at the dock, you can admire it from the Kiellinie.



Kiellinie at naval base Kiel Wik

**APPROX. 60 MIN. FROM WELCOME CENTER
OR BY BUS LINE 41/42 TO DIEDERICHSEN PARK****20**



Die Holtenauer

An attractive range of shopping options awaits you from Dreiecksplatz via the covered Holtenauer arcades and along the entire Holtenauer StraÙe. When your feet feel tired, you can spend time in the cafés and restaurants.

Mon–Fri 10am–7 pm,
Sat 10am–4 pm
www.die-holtenauer.de



APPROX. 20 MIN.
FROM WELCOME
CENTER

21



Old Botanical Garden

Snaking paths lead along hundreds of beautiful and interesting flowers. On the top of a hill you can even access a small observation tower which offers a lovely view across the garden and the Kiel Fjord. Discover the Old Botanical Garden of Kiel.

www.alter-botanischer-garten-kiel.de



APPROX. 25 MIN.
FROM WELCOME
CENTER

22



3000 m²

DECATHLON Kiel
im REWE Center
Winterbeker Weg 44
Mo–Sa 10–20 Uhr



200 m²

DECATHLON Kiel-City
Holstenstr. 80 - 82
Mo–Sa 11–19 Uhr





CITTI-PARK

40,000 m² of shopping pleasure: In addition to 80 specialist shops numerous restaurants and cafés invite you to linger.

Mühlendamm 1 · 24113 Kiel · Mon–Sat 9 am–8 pm · www.citti-park-kiel.de



APPROX. 4 MIN. BY TRAIN FROM MAIN STATION

23



E-Bike Rental

Kiel on two wheels - rent an e-bike for the day. Cycle for example on the Baltic Sea coastal cycle track – you will be amazed at all the things to see in the city by the sea.

Rental: May–October, 25,– € per bike



AT WELCOME CENTER OR IN THE
TOURIST INFORMATION HEIKENDORF



Hop-on Hop-off City Sightseeing

Discover Kiel in comfort on a double decker bus. The informative audio commentary tells you all you need to know about our lively city.



March–Oct. · Tickets: directly on the bus or at the Welcome Center
www.kiel-sailing-city.de/en



VARIOUS BUS STOPS
(SEE FOLD-OUT MAP)



Locks at Kiel Canal

You can view all the big and small ships from the observation platform at the locks.

If you are lucky you might even spot one of the many cruise liners that pass the Kiel Canal each year. You can take the Adler 1 bicycle and passenger ferry to cross over to the other side of the Kiel Canal free of charge and explore the Tiessenkai.

www.kiel-sailing-city.de/en



~~~~~  
**BY BUS LINE 11 TO KIEL WIK KANAL**

**24**



## Kiel's beaches

Beautiful sandy beaches all round Kiel Fjord e.g. in Falckenstein, Schilksee or Heikendorf entice you to relax and quickly forget the stresses of everyday life.

[www.kiel-sailing-city.de/en](http://www.kiel-sailing-city.de/en)



## Kiel Fjord western shore

Explore the urban flair of the city centre, buzzing student neighbourhoods such as Ravensberg or Schreventeich, the maritime neighbourhood in the Wik, the Olympic spirit in Schilksee or leisure activities at Falckensteiner Strand.



~~~~~  
**BY VARIOUS BUS LINES,
BY BIKE OR ON FOOT**



Kiel Fjord eastern shore

Experience living history in Schönkirchen, the idyllic harbour in Mönkeberg or relax on the beach in Heikendorf Baltic Sea lido. Everyone can find their special place of happiness somewhere on Kiel Fjord.

Travel by ferry to Möltenort, departing from Bahnhofsbrücke, Duration: approx. 45 min.



~~~~~  
**APPROX. 5 MIN. FROM  
WELCOME CENTER**



## CAP Kiel Experience Centre

In the immediate vicinity of the international ferry terminals, the CAP offers a cosy beer bar, a steakhouse and Subway. Here you can play bowling and billiards, go to the cinema or dance the night away at the Anna discotheque at the weekend.

Kaistraße 54–56 · 24114 Kiel · [www.cap-kiel.de](http://www.cap-kiel.de)

Sun–Thu 8.30 am–2 am, Fri–Sat 8.30 am–4 am



APPROX. 5 MIN. FROM WELCOME CENTER

25



## Maritime Museum

The permanent exhibition in the ancient fish hall shows Kiel's history in all its facets as a harbour town, as a naval and shipyards and as a centre for sailing.

Wall 65, 24103 Kiel · Tue–Sun 10 am–6 pm · [www.kiel.de/museum](http://www.kiel.de/museum)



APPROX. 15 MIN. FROM WELCOME CENTER

26



## Warleberger Hof

The city museum is located in one of Kiel's oldest buildings Kiel, a former aristocratic court dating from 1616. Changing special exhibitions highlight the art, culture and history of the city in the 19th and 20th century.

Dänische Str. 19, 24103 Kiel · Tue–Sun 10 am–6 pm · [www.kiel.de/museum](http://www.kiel.de/museum)



APPROX. 15 MIN. FROM WELCOME CENTER

27



## Photo spots for the best cruise ship pictures (see on map)

1. Viewing platform Ostseekai
2. Terrace Schwedenkai
3. Along the Kiellinie promenade
4. Seebadeanstalt/Seebar Kiel



### Key

On the folded map on the right you will find the numbers to the Kiel tips listed below:



Shopping areas



Sightseeing



Top-Tip



Pedestrian zone



Photo spot



Museums in Kiel



Main railway station



Welcome Center  
incl. E-Bike Rental



no passage



Hop-on Hop-off  
daily city tours,  
March – October  
(see page 9)

### Imprint

#### Kiel-Marketing e.V.

Andreas-Gayk-Str. 31

24103 Kiel

Phone +49 (0)431 -67 91 00

Mail [info@kiel-sailing-city.de](mailto:info@kiel-sailing-city.de)

Web [www.kiel-sailing-city.de/en](http://www.kiel-sailing-city.de/en)

#### Publisher

V.i.S.d.P.: Uwe Wanger

Editorial: Jana Kärcher, Katharina Volpp,

Liv Hinzmann

#### Print

GSK vertrauen punkt erfolg GmbH

[www.gskvpe.de](http://www.gskvpe.de)

#### Layout and composition

bdrops GmbH, Kiel

#### Photos

B. Quante, Die Holtener e.V.,  
F. Schulze/Falkemedia, O. Franke,  
Geomar, J. König, Kieler Brauerei,  
Kiel-Marketing, KLAHN, K. Kokott,  
T. Körber, M. Masch, K. Steiguer,  
C. Heinze, Sophienhof,  
Cover: Nick Hanke

Updated 06/2024

All information subject to change –

All rights reserved by Kiel-Marketing

**TOURIST**



# WELCOME CENTER



Ticket presale by

**eventim** 

## INFORMATION

**TICKETS · SIGHTSEEING · SOUVENIRS · EVENTS**

**WELCOME CENTER KIELER FÖRDE + CAFÉ  
AND TOURIST-INFORMATION HEIKENDORF**

Tel. +49 (0)431 – 679100 | [www.kiel-sailing-city.de/en](http://www.kiel-sailing-city.de/en)



19 July – 25 August

### BOOTSHAFENSOMMER

Six weekends full of live music  
on a floating free stage.



4 – 6 October

### FARMER'S MARKET

Autumn market with  
Sunday shopping



2 – 3 November

### KIELER LICHTERMEER (SEA OF LIGHTS)

Music, cabaret and light spec-  
tacle with Sunday shopping



21 November – 23 December

### KIEL CHRISTMAS MARKETS

The most beautiful  
Christmas world in the North



13 November 2024 – 12 January 2025

### STADTWERKE ICE FESTIVAL

Ice skating fun with fjord view at Ostseekai

**Kiel.**  
**K!el**

Sailing.City.

[www.kiel-sailing-city.de/en](http://www.kiel-sailing-city.de/en)





Stützpunkt Tirpitzhafen  
Kiel-Schilksee

18 19 20 4

N  
250 m  
0 m

Schematische Karte, nicht maßstabsgetreu

Alter Botanischer Garten

Hegewischstr.

Schloßgarten

Ratsdienergarten

Kieler Schloss

NDR

Wall

Sartorikai

GERMAN NAVAL YARDS  
(ehm. HDW)

thyssenkrupp

Werftstraße

Ostring

Vineta-Platz

hafen

400

Segelcamp

Reventloubrücke

17

22

3

Kriellinie

16

15

1

Cruise Terminal Ostseekai

20

Seegartenbrücke

26

Museumsbrücke

Schwentine

Ost-ufer-hafen

Fachhochschule Kiel  
Medien-dom

GEOMAR

Norwegenkai



# KIEL MEETS SHOPPING

**Here you will find  
the top trends in  
120 shops – right next  
to the main train station  
and the harbour.**



[facebook.com  
/sophienhof](https://facebook.com/sophienhof)



[instagram.com  
/sophienhof](https://instagram.com/sophienhof)



 **sophienhof**