

Short Report



Holiday cottage "Irreler Mühle" – Apartment at Mühlgraben | ©Felsenland Südeifel Tourismus

Holiday cottage "Irreler Mühle" – Apartment at Mühlgraben

Talstraße 23
54666 Irrel

Tel: +49 6525 9346494 oder
93096

info@irreler-muehle.de
<https://irreler-muehle.de/>

Welcome!

The former mill is located on the outskirts of Irrel on the Nims – in the middle of the Felsenland Südeifel. Four vacation apartments to feel good invite you!

The 60 sqm 'Wohnung am Mühlgraben' is located on the first floor of the Irrel mill and is suitable for up to 4 people. It has a large, open living room, combined with kitchen and dining area, two bedrooms and a bathroom. The furnishings are calm and refined: oak parquet flooring and tiles, walls in warm brown, white and blackberry. In the living room leather sofas and armchairs invite you to snuggle and browse, in the double bedroom with the beautiful old farmhouse wardrobe and white upholstered bed you are guaranteed to spend heavenly nights.

TEST RESULT

for

Ferienhaus Irreler Mühle – Wohnung am Mühlgraben

54666 Irrel, Certificate-ID: PA-01260-2025



This offer was classified according to
the criteria of the nationwide label

»Tourism for All«

and, in the period from

August 2025 – July 2028

is entitled to use the label

»Accessibility checked«

and the associated pictograms
in accordance with the contract.

Overview

- Located on the outskirts of Irrel
- 60 sqm first floor apartment

Accessibility at a glance

- Parking space for the vacation apartment
- Step-free side entrance
- All rooms and facilities that are accessible to guests are step-free
- 80 cm minimum width of all doorways/doors
- WC for people with disabilities
- Step-free shower
- Shower chair or seat available
- Assistance dogs welcome

Information for people with walking difficulties and wheelchair users

All areas relevant for testing meet the quality criteria of the label "**Accessibility certified – partially accessible for people with walking disabilities**".

Some **information on accessibility** are listed below. For detailed information please see the evaluation report.

- There is a parking space available for the holiday home.
- The "Mühle" bus stop is 180 m away.
- The holiday apartment is accessible without steps via the rear entrance.
- All rooms and facilities that are accessible to guests are accessible without steps.
- All doors/passages that are accessible to guests are at least 80 cm wide.
- The dining table is wheelchair accessible (maximum height 80 cm, wheelchair accessibility at a height of 67 cm and a depth of 30 cm).
- The work surface in the kitchen, the sink, and the stove are not wheelchair accessible.
- The toilet in the bathroom is accessible from the left (at least 90 cm). There is a folding grab rail on the accessible side of the toilet.
- The sink is wheelchair accessible and the mirror can be seen while standing and sitting.
- Access to the shower is threshold-free. A shower seat and suction grab rails are available.

Information for people with hearing impairments and deaf people

Some **information on accessibility** are listed below. For detailed information please see the evaluation report.

- There is no clearly visible alarm.
- The ringing or knocking on the door is not indicated by a flashing signal.
- WiFi is offered.
- There is at least one electrical outlet available near the bed.

Information for visually impaired and blind people

Some **information on accessibility** are listed below. For detailed information please see the evaluation report.

- Assistance dogs are allowed in relevant areas/rooms.
- The entrances are visually rich in contrast.
- The staircase to the main entrance is not visually rich in contrast, it has handrails on both sides.
- All evaluated and usable areas for the guest are well illuminated, i.e. bright and glare-free.
- Information is not available in Braille or prismatic font.

Information for guests with cognitive impairments

Some **information on accessibility** are listed below. For detailed information please see the evaluation report.

- The name or logo of the establishment is clearly recognizable from the outside.
- There is no information in easy language.

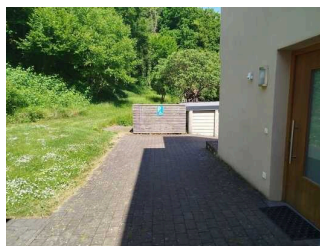
Image Gallery

We have put together some photos from the company / offer for you. You can find more photos in the detailed reports.



**In-house parking
for people with
disabilities**

©Julia Marmulla



**In-house parking
for people with
disabilities**

©Julia Marmulla



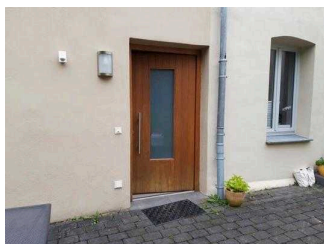
Main entrance (stairs)

©Julia Marmulla



Main entrance (stairs)

©Julia Marmulla



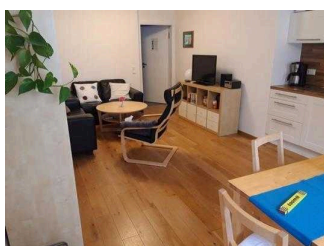
**Stepless rear
entrance**

©Julia Marmulla



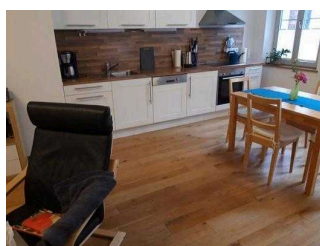
**Stepless rear
entrance**

©Julia Marmulla



**Living room with
kitchen**

©Julia Marmulla



**Living room with
kitchen**

©Julia Marmulla



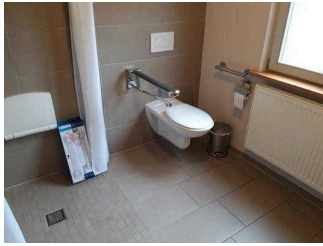
Bedroom 1

©Julia Marmulla



Bedroom 2

©Julia Marmulla



Bathroom

©Julia Marmulla



Bathroom

©Julia Marmulla



**Common area at the
main entrance**

©Julia Marmulla

Information on the "Tourism for All" labeling system

All establishments and locations certified with the label "Tourism for All" meet the following quality criteria:

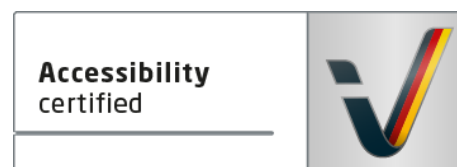
- Data and information on accessibility are collected and checked on site by **external, specially trained evaluators**. The method is not based on self-assessments.
- Data on accessibility is available **in detail** and can be viewed by the guests.
- At least one staff member has successfully passed a **training** on "**Accessibility as a comfort and quality feature**".

The labeling – explanation of the logos and pictograms

The label "**Information about Accessibility**" indicates that detailed and verified information on accessibility is available for all groups of people.



The label "**Accessibility certified**" is based on "Information about Accessibility". It means that the quality criteria defined for specific groups of people are met partially or completely.



The label "**Accessibility certified**" is available in two requirement levels:

"Accessibility certified: partially accessible".

The quality criteria are partially fulfilled for the pictured group of people, i.e. the establishment/location is partially accessible for wheelchair users. The "i" in the pictogram indicates that it is recommended to read again carefully whether the offer meets all (your oder the guest's) individual requirements.



"Accessibility certified: accessible".

The quality criteria are fulfilled for the pictured group of people, i.e. the establishment/location is accessible for wheelchair users.



There are defined quality criteria for **seven groups of people** and a **specific pictogram** for each group.

People with walking disabilities



Wheelchair users



People with hearing impairment



Deaf people



People with visual impairments



Blind people



People with cognitive impairments

